

Errata for
**Flexible Parametric Survival models using Stata:
Beyond the Cox Model
(First Printing)**

February 21, 2014

Chapter 3

- Page 42: third last line. The variable name is `birthdate` not `datebirth`.
- Page 43: “The age at the event or censoring is determined by `enddate` minus `startdate`”. This should be “The age at the event or censoring is determined by `enddate` minus `birthdate`”
- Page 43: “Two dummy variables, `exp2` and `exp3`, denote the prostate cancer patients with and without a bilateral orchiectomy, respectively.” This should be “without and with a bilateral orchiectomy, respectively.”
- Page 44: The caption of Figure 3.3 caption should state “men randomly sampled from the general population” not “men diagnosed with prostate cancer”.

Chapter 4

- Page 72: middle of page.
“`generate lh1 = -2.485 + 0.259*t_rcs1 + 0.012...`” should be
“`generate lh1 = -2.485 - 0.259*t_rcs1 + 0.012...`”
- Page 80: Line 13 of the code should be
`var_ch = L*(diag(h)*(X*V*X')*diag(h)')*L'`

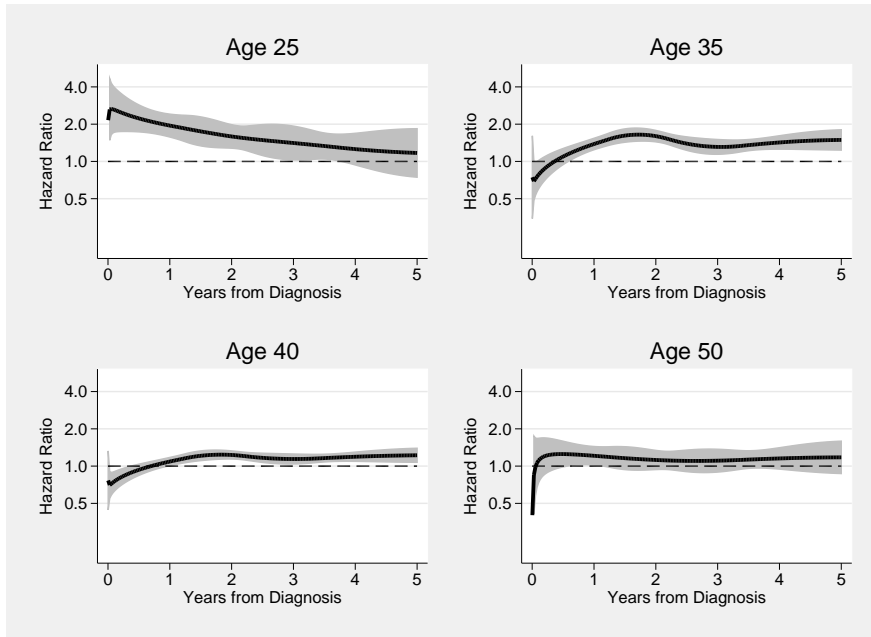
Chapter 5

- Page 109 In the last four lines of the code at the bottom of the page the $\hat{3}$ should be replaced with $\hat{3}$.
- Page 120: For consistency with pages 18 and 49, note that L_i is the likelihood contribution for the i^{th} subject. All occurrences of l_i should be replaced with L_i in the first half of page 120. The phrase “contribution, l_i , of the i^{th} observation” should be replaced with “contribution, $\ln L_i$, of the i^{th} observation” in line 4.

Chapter 7

- Page 185 - First line of code should read
`generate midtime = (start + end)/2`
- This has the knock on effect of making the labels for the time scales for Figures 7.7, 7.8, and 7.9 incorrect. The labels should be 0, 1, 2, 3, 4, 5 rather than 0-10.

- Page 200 - `timevar(timevar)` should be replaced with `timevar(temptime)` in the Stata code.
- Page 201 - Figure 7.18. The AIC and BIC values are incorrect. The lowest values are still for `df(1)` for both AIC and BIC and so the best fitting model remains the same.
- Page 210. Figure 7.22 is incorrect and resulted from not running a do file that relies on local macros (`c1-c4`) in one session. The code on page 209 is correct. The correct graph is shown below.



- Page 212 - 3rd and 4th line after output. The variable name is `birthdate` not `datebirth`.

Chapter 9

- Page 287 - end of third paragraph: `dftevc` should read `dftvc`
- Page 324 - There should be the `bhazard(rate)` option in the `stpm2` model to make it a relative survival model. This has the knock on effect of Figures 9.16, 9.17 and 9.18 do not give the correct estimates. The do files which can be downloaded from the book webpage will produce the correct figures.

References

- Page 337. Royston P and Sauerbrei (2008). Should read ‘Multivariable Model Building ...’ not ‘Multivariate Model Building ...’.